



# Table of Contents

## New Products

Connect-ALL . . . . .	1
Cone Chain Connector . . . . .	2
Magnet Ring/Carabiner Kit and Loading Dock Kit . . . . .	3
Sign Kits. . . . .	4
X-Treme Duty Stanchions . . . . .	5

## Top Selling Products

### Plastic Safety Chain

1" Plastic Chain . . . . .	6
1.5" Plastic Chain. . . . .	6
2" Plastic Chain . . . . .	7
2" Heavy Duty Plastic Chain . . . . .	7
3" Plastic Chain . . . . .	8
Color Chart for Plastic Safety Chain . . . . .	8

### Stanchions and Ground Poles

2" Plastic Stanchions . . . . .	9
2.5" Plastic Stanchions . . . . .	9
3" Plastic Stanchions . . . . .	10
2.5" Ground Poles . . . . .	10
Color Chart for Stanchions and Ground Poles. . . . .	10

## Chain and Stanchion Kits

2.5" Plastic Stanchion Kits . . . . .	11
3" Plastic Stanchion Kits . . . . .	11

Suggested Chain Length Between Stanchions . . . . .	13
Recommended Chain to be used with eash Stanchion. . . . .	13



# New Products

## Connect-ALL<sup>®</sup>

**SMALL - Up to 11" circumference.**



**LARGE - Up to 17" circumference.**



97603-S	Small— fits up to 11" diameter	Weight: 1#
97603-S25	Small Kit—includes 2 Connect-ALLs and 25' of 2" yellow chain	Weight: 3#
97603-L	Large—fits up to 17" diameter	Weight: 1#
97603-L25	Large Kit—includes 2 Connect-ALLs and 25' of 2" yellow chain	Weight: 4#

To paraphrase Henry Ford from 1909 regarding the Model T: ***"You can have any color as long as it's black."***  
All parts of the Connect-ALL are black.



10700 Frankstown Road, Suite 105 • Pittsburgh, PA 15235  
(866) 855-1249  
www.todoos.com • info@todoos.com





# Cone Chain Connector

## Cone Chain Connector Kits

974**-KIT	Cone Chain Connector Kit	Weight: 5#
-----------	--------------------------	------------

**Kit Includes:** 6 Cone Chain Connectors and 50' of 2" Chain.

974**-PAIL	Cone Chain Connector Kit in Pail	Weight: 10#
------------	----------------------------------	-------------

**Kit Includes:** 12 Cone Chain Connectors and 100' of 2" Chain in a Pail.

## Traffic Cone & Chain Kits—Discounts are limited on kits that include traffic cones.

932**-6	Traffic Cone & Chain Kit—28" height	Weight: 50#
---------	-------------------------------------	-------------

932**-6	Traffic Cone & Chain Kit with Reflective Collar—28" height	Weight: 50#
---------	------------------------------------------------------------	-------------

**Each Kit Includes:** 6 PVC injection molded wide body cones (height 28", base 14" x 14", weight 7 lbs.) 6 Cone Chain Connectors and 50' of 2" Chain.

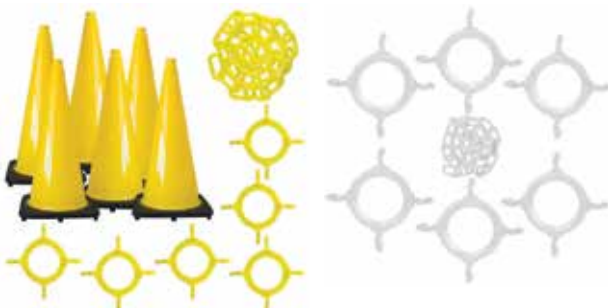
97213-6	Traffic Cone & Chain Kit—36" height	Weight: 68#
---------	-------------------------------------	-------------

97214-6	Traffic Cone & Chain Kit—36" height	Weight: 68#
---------	-------------------------------------	-------------

97277-6	Traffic Cone & Chain Kit with Reflective Collar—36" height	Weight: 68#
---------	------------------------------------------------------------	-------------

97280-6	Traffic Cone & Chain Kit with Reflective Collar—36" height	Weight: 68#
---------	------------------------------------------------------------	-------------

**Each Kit Includes:** 6 PVC injection molded wide body cones (height 36", base 14" x 14", weight 10 lbs.) 6 Cone Chain Connectors and 50' of 2" Chain.



Cone Chain Connector Kits	
Color Code	Color
01	White
02	Yellow
06	Blue
13	Traffic Orange
14	Safety Green
28" Traffic Cone & Chain Kits	
Color Code	Color
01	White
02	Yellow
06	Blue
13	Traffic Orange
14	Safety Green
36" Traffic Cone & Chain Kits	
Color Code	Color
13	Traffic Orange
14	Safety Green
28" & 36" Traffic Cone & Chain Kits With Reflective Collar	
Color Code	Color
77	Safety Green
80	Traffic Orange



10700 Frankstown Road, Suite 105 • Pittsburgh, PA 15235

(866) 855-1249

www.todoos.com • info@todoos.com

# Magnet Ring/Carabiner Kit and Loading Dock Kit

## Loading Dock Kit

72302	Loading Dock Kit	Weight:2#
-------	------------------	-----------

**Kit Includes:** 2-magnet rings, 2-carabiners and 1-10' piece of 2" heavy duty yellow chain. (This kit is made to fit a standard 9' wide door. For other size door openings, chain should be ordered separately.)

## Magnet Ring/Carabiner Kit

72103	Magnet Ring/Carabiner Kit	Weight:1#
-------	---------------------------	-----------

**Kit Includes:** 2 Magnet Rings and 2 Carabiners. Available in Black only.

90403	Magnet Ring-ea	Pat. No. US D752,418	Weight:1#
-------	----------------	----------------------	-----------

92503	Carabiner-ea	Pat. No. US D741,692	Weight:1#
-------	--------------	----------------------	-----------



10700 Frankstown Road, Suite 105 • Pittsburgh, PA 15235

(866) 855-1249

[www.todoos.com](http://www.todoos.com) • [info@todoos.com](mailto:info@todoos.com)

# Sign Kits - For use with metal door frames

## Closed Kit

7403CL	3' Closed Kit (includes 36" of chain)	Weight:1#
7406CL	6' Closed Kit (includes 72" of chain)	Weight: 2#
7412CL	12' Closed Kit (includes 144" of chain)	Weight: 4#

Kit Includes: 1-Closed sign (8" x 8"), 2-magnet rings, 2-carabiners, 1-sign fastener and 1-piece of 2" yellow chain.

## Wet Floor Kit

7403WF	3' Wet Floor Kit (includes 36" of chain)	Weight:1#
7406WF	6' Wet Floor Kit (includes 72" of chain)	Weight:2#
7412WF	12' Wet Floor Kit (includes 144" of chain)	Weight: 4#

Kit Includes: 1-Wet Floor sign (8" x 8"), 2-magnet rings, 2-carabiners, 1-sign fastener and 1-piece of 2" yellow chain.

## Danger Kit - with reflective red dot

7403DA	3' Danger Kit (includes 36" of chain)	Weight:1#
7406DA	6' Danger Kit (includes 72" of chain)	Weight: 2#
7412DA	12' Danger Kit (includes 144" of chain)	Weight: 4#

Kit Includes: 1-Danger sign (8" x 8"), 1- reflective red dot, 2-magnet rings, 2-carabiners, 1-sign fastener and 1-piece of 2" red chain.



Pat. No. US D752,418



Pat. No. US D741,692



10700 Frankstown Road, Suite 105 • Pittsburgh, PA 15235

(866) 855-1249

[www.todoos.com](http://www.todoos.com) • [info@todoos.com](mailto:info@todoos.com)



# X-treme Duty Stanchions (46.5" overall height)

923XX	X-Treme Duty Plastic Stanchion-ea	Weight: 9#
923XX-2	X-Treme Duty Plastic Stanchion-2 pk	Weight: 18#
<b>One complete stanchion includes:</b> 2-3" diameter poles (16" long), 1-handle top, 1-extension piece, and 1-base with water bladder for ballast.		



## Stanchion Features:

- Wheels on base
- Ribbed handle
- Built in C-Hooks
- Keyhole slot
- Water bladder for ballast
- Weight— 7 lbs. empty  
25 lbs. filled
- 45.5" overall height
- Base size 19" x 19" x 5"

Color Code	Color
02	Yellow
03	Black
88	Yellow/Black



Wheels on back of base.



Pat. Nos. US D752,775 S  
and US D761,444 S



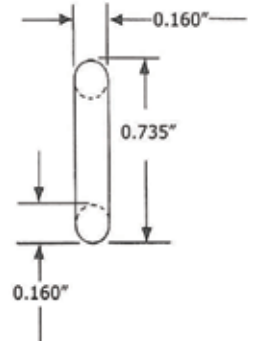
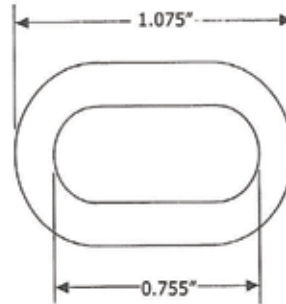
10700 Frankstown Road, Suite 105 • Pittsburgh, PA 15235  
(866) 855-1249  
www.todoos.com • info@todoos.com

# Top Selling Products

## Plastic Safety Chain

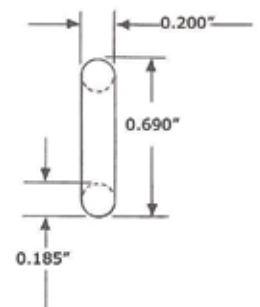
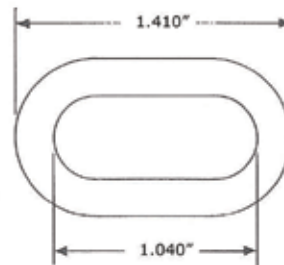
### 1" Plastic Chain (#4, 25 mm)

100XX-25	25 Feet	Weight: 1#
100XX-50	50 Foot Box	Weight: 2#
100XX-100	100 Foot Box	Weight: 3#
100XX-500	500 Foot Box	Weight: 15#
100XX-P	350 Foot Pail	Weight: 12#
101XX	250 Foot Reel	Weight: 9#



### 1.5" Plastic Chain (#6, 38 mm)

300XX-25	25 Foot Box	Weight: 2#
300XX-50	50 Foot Box	Weight: 3#
300XX-100	100 Foot Box	Weight: 5#
300XX-300	300 Foot Box	Weight: 13#
300XX-500	500 Foot Box	Weight: 25#
300XX-P	300 Foot Pail	Weight: 15#
301XX	200 Foot Reel	Weight: 9#



Tensile Test: 1.5" Chain

Tensile Strength: 125 lbs.

Our chain should be used strictly for decorative or visual warning purposes. It is not intended for load bearing use.



10700 Frankstown Road, Suite 105 • Pittsburgh, PA 15235

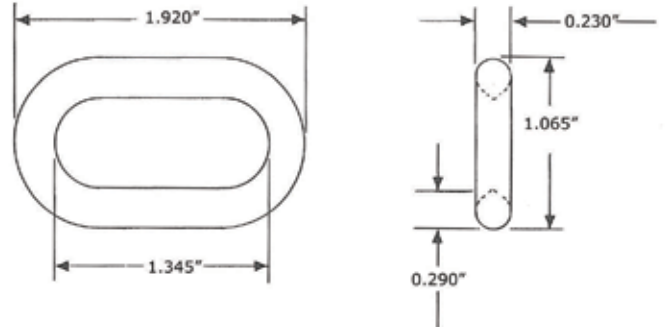
(866) 855-1249

[www.todoos.com](http://www.todoos.com) • [info@todoos.com](mailto:info@todoos.com)



## 2" Plastic Chain (#8, 51 mm)

500XX-25	25 Foot Box	Weight: 2#
500XX-50	50 Foot Box	weight: 4#
500XX-100	100 Foot Box	Weight: 7#
500XX-200	200 Foot Box	weight: 14#
500XX-300	300 Foot Box	weight: 21#
500XX-500	500 Foot Box	Weight: 31#
500XX-P	160 Foot Pail	Weight: 13#
501XX	125 Foot Reel	Weight: 10#



Tensile Test: 2" Chain

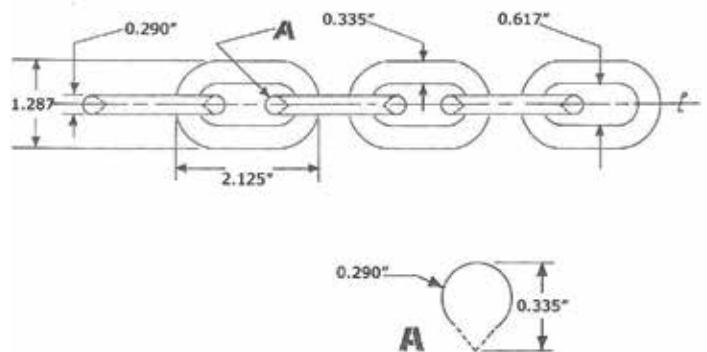
Tensile Strength: 200 lbs.

Our chain should be used strictly for decorative or visual warning purposes. It is not intended for load bearing use.



## 2" Heavy Duty Plastic Chain

510XX-25	25 Foot Box	Weight: 3#
510XX-50	50 Foot Box	Weight: 5#
510XX-100	100 Foot Box	Weight: 10#
510XX-200	200 Foot Box	Weight: 20#
510XX-300	300 Foot Box	Weight: 30#
510XX-500	500 Foot Box	Weight: 50#
510XX-P	120 Foot Pail	Weight: 13#
511XX	100 Foot Reel	Weight: 12#



Tensile Test: 2" Heavy Duty Chain

Tensile Strength: 300 lbs.

Our chain should be used strictly for decorative or visual warning purposes. It is not intended for load bearing use.



10700 Frankstown Road, Suite 105 • Pittsburgh, PA 15235

(866) 855-1249

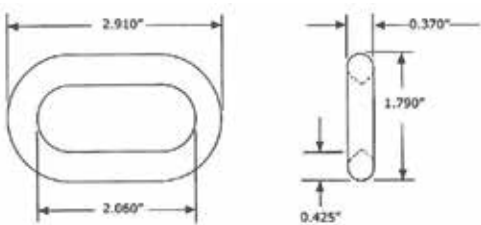
www.todoos.com • info@todoos.com

# 3” Plastic Chain (#10, 76 mm)

800XX-25	25 Foot Box	Weight: 4#
800XX-100	100 Foot Box	Weight: 16#
800XX-300	300 Foot Box	Weight: 46#
800XX-P	70 Foot Pail	Weight: 13#
801XX	60 Foot Reel	Weight: 11#

Tensile Test: 3” Chain  
Our chain should be used strictly for decorative or visual warning purposes. It is not intended for load bearing use.

Tensile Strength: 400 lbs.



All chain is available in the colors listed.

Bi-color chain is also available (colors alternate approximately every two feet).

Additional chain sizes available.

Contact your sales representative.

Color Code	Color
01	White
02	Yellow
03	Black
04	Green
05	Red
06	Blue
07	Khaki Gold
08	Silver
09	Gold
12	Safety Orange
13	Traffic Orange
14	Safety Green
18	Magenta
54	Evergreen
66	Cobalt Blue

# Stanchions and Ground Poles

## 2" Plastic Stanchions

**One complete stanchion includes:** 1-2" diameter pole, 1-C-hook, 1-ball top, and 1-14" base for the 2" stanchion. Perforated slots on the top of the 2" pole allows chain to be hung with the c-hook or in one continuous length. See Solid Color Stanchion chart to the right for available colors.

915XX-2	2" Plastic Stanchion (41" Overall Hgt)-2 pk	Weight: 5#
915XX-6	2" Plastic Stanchion (41" Overall Hgt)-6 pk	Weight: 12#



## 2.5" Plastic Stanchions (40" overall height)

**One complete stanchion includes:** 1-2.5" diameter pole, 1-C-hook, 1-ball top, and 1-14" base for the 2.5" stanchion. Perforated slots on the top of the 2.5" pole allows chain to be hung with the c-hook or in one continuous length. See Solid Color Stanchion chart to the right for available colors.

964XX-2	2.5" Plastic Stanchion-2 pk	Weight: 7#
964XX-6	2.5" Plastic Stanchion-6 pk	Weight: 18#
965XX-2	2.5" Plastic Stanchion with Glass Solar Ball Top (solar ball top glows white)-2 pk	Weight: 7#
965XX-6	2.5" Plastic Stanchion with Glass Solar Ball Top (solar ball top glows white)-6 pk	Weight: 18#
963XX-2	2.5" Plastic Stanchion with Safety Solar Ball Top (solar ball top glows orange)-2 pk	Weight: 7#
963XX-6	2.5" Plastic Stanchion with Safety Solar Ball Top (solar ball top glows orange)-6 pk	Weight: 18#



10700 Frankstown Road, Suite 105 • Pittsburgh, PA 15235

(866) 855-1249

[www.todoos.com](http://www.todoos.com) • [info@todoos.com](mailto:info@todoos.com)



## 3" Plastic Stanchions (41" overall height)

**One complete stanchion includes:** 1-3" diameter pole, 1-C-hook, 1-ball top, and 1-16" base for the 3" stanchion. See Solid Color Stanchion chart to the right for available colors.

999XX-2	3" Plastic Stanchion-2 pk	Weight: 8#
999XX-4	3" Plastic Stanchion-4 pk	Weight: 16#
999XX-6	3" Plastic Stanchion-6 pk	Weight: 21#



## 2.5" Ground Poles (35" overall height)

954XX	2.5" Ground Pole-ea	Weight: 2#
2 Reflective Stripes or a Warning Label, add \$5.00 per pole. <b>Chain Sold Separately.</b> Perforated slots on the 2" and 2.5" poles allow chain to be hung with c-hook or in one continuous length.		



All stanchions and ground poles are available with the options listed below. Contact your sales representative.

Solid Color Ground Poles:	
Color Code	Color
01	White
02	Yellow
03	Black
05	Red
06	Blue
08	Silver
12	Safety Orange
14	Safety Green

Stripe Ground Poles:	
Color Code	Poles/Stripe
20	Black/White
22	Safety Orange/White
25	Blue/White
29	Black/Yellow
30	Yellow/Magenta
34	Red/Yellow
35	Red/White
36	Black/Red

Warning Label Ground Poles:	
Warning Label Code	Pole Color
69	White
71	Yellow
70	Black
68	Red
65	Blue
67	Safety Orange
44	Safety Green

Reflective Stripe Ground Poles:	
Reflective Stripe Code	Pole Color
46	White
49	Yellow
50	Black
51	Red
42	Blue
78	Safety Orange
77	Safety Green

Any color combination of stanchion or ground pole and stripe is available. Price includes 4 stripes per pole.  
Stripe Colors available: white, yellow, black, red, blue, orange, green, magenta.

10700 Frankstown Road, Suite 105 • Pittsburgh, PA 15235  
(866) 855-1249

www.todoos.com • info@todoos.com

# Chain and Stanchion Kits

## 2.5" Stanchion Kits:

711XX-6	2.5" Plastic Stanchion Kit-6 pk	Weight: 22#
<b>Kit Includes:</b> 6-complete stanchions and 50' of 2" chain. See Solid Color Stanchion chart to the right for available colors.		
964XX-4	2.5" Public Safety Kit-4 pk	Weight: 20#
<b>Kit Includes:</b> 4-complete stanchions, 2-sign adapters (1.25" deep; holds signs up to 1/16" thick), and 3-10 ft. pieces of 2" chain. See Public Safety chart to the right for available colors.		

## 3" Stanchion Kits:

713XX-4	3" Stanchion Kit-4 pk	Weight: 20#
<b>Kit Includes:</b> 4-complete stanchions and 30' of 2" heavy duty chain. See Solid Color Stanchion chart to the right for available colors.		
999XX-4	3" Public Safety Kit-4 pk	Weight: 20#
<b>Kit Includes:</b> 4-complete stanchions, 2-sign adapters (1.25" deep; holds signs up to 1/16" thick), and 3-10 ft. pieces of 2" heavy duty chain. See Public Safety chart to the right for available colors.		



10700 Frankstown Road, Suite 105 • Pittsburgh, PA 15235

(866) 855-1249

www.todoos.com • info@todoos.com







## Suggested Chain Length Between Stanchions

	1.5" Chain	2" Chain	2" Heavy Duty Chain	3" Chain
2" Stanchion	Space stanchion 8.5' apart, cut chain to 9'.	Space stanchion 7' apart, cut chain to 7.5'.		
2" Stanchion <b>Weighted</b>	Space stanchion 14' apart, cut chain to 14.5'.	Space stanchion 12' apart, cut chain to 12.5'.		
2.5" Stanchion	Space stanchion 10' apart, cut chain to 10.5'.	Space stanchion 7.5' apart, cut chain to 8'.	Space stanchion 6.5' apart, cut chain to 7'.	
2.5" Stanchion <b>Weighted</b>	Space stanchion 15' apart, cut chain to 15.5'.	Space stanchion 13' apart, cut chain to 13.5'.	Space stanchion 11.5' apart, cut chain to 12'.	
3" Stanchion		Space stanchion 9' apart, cut chain to 9.5'.	Space stanchion 7' apart, cut chain to 7.5'.	Space stanchion 6.5' apart, cut chain to 7'.
3" Stanchion <b>Weighted</b>		Space stanchion 18' apart, cut chain to 18.5'.	Space stanchion 15' apart, cut chain to 15.5'.	Space stanchion 12.5' apart, cut chain to 13'.
X-Treme Duty Stanchion		Space stanchion X' apart, cut chain to X'.	Space stanchion X' apart, cut chain to X'.	Space stanchion X' apart, cut chain to X'.
X-Treme Duty Stanchion <b>Weighted</b>		Space stanchion X' apart, cut chain to X'.	Space stanchion X' apart, cut chain to X'.	Space stanchion X' apart, cut chain to X'.

This above distances are approximate to assist buyers in determining the quantity needed. Each application will have its own variables that may make it necessary to adjust the distance between stanchions. Chain length includes enough chain to create a drape between the stanchions 20" from floor at center. It is not recommended that the distance be any greater than those listed above. If you need assistance with the quantity needed, any Tamis representative will be glad to assist you. Distance between stanchions is measured from center to center of poles.

For increased stability, Tamis recommends that all stanchions be weighted.

2" stanchion weighted totals 4.5 lbs. when filled with sand.

2.5" stanchion weighted totals 6.5 lbs. when filled with sand.

3" stanchion weighted totals 12 lbs. when filled with sand.

X-Treme stanchion weighted totals 25lbs. when filled with water.

## Recommended Chain to be used with each Stanchion

STANCHIONS AND GROUND POLES	CHAIN
2" Stanchions and Ground Poles	1.5" 2"
2.5" Stanchions and Ground Poles	2" 2" Heavy Duty 3"
3" Stanchions and Ground Poles	2" 2" Heavy Duty 3"
X-Treme Stanchions	2" Heavy Duty 3" 4"



10700 Frankstown Road, Suite 105 • Pittsburgh, PA 15235  
(866) 855-1249  
[www.todoos.com](http://www.todoos.com) • [info@todoos.com](mailto:info@todoos.com)